

Frascio®

Italian Design | American Engineering

Condensed Product Guide



A valued brand of

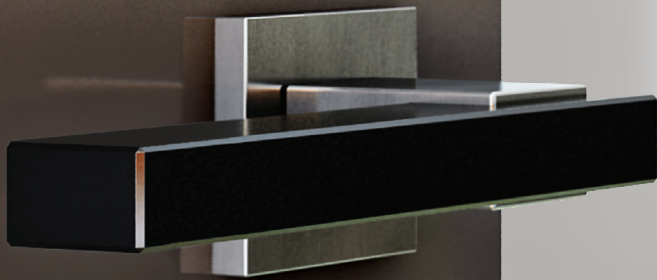
FR International

www.FRInternational.com

Open a world of lever design possibilities

Frascio is a valued brand of FR International, a leading manufacturer and supplier of some of the world's finest decorative door hardware.

Because FR International manufactures original door hardware, we offer custom manufacturing to meet special needs in modifications, door trim and adaptations to existing door/frame conditions.



Contents

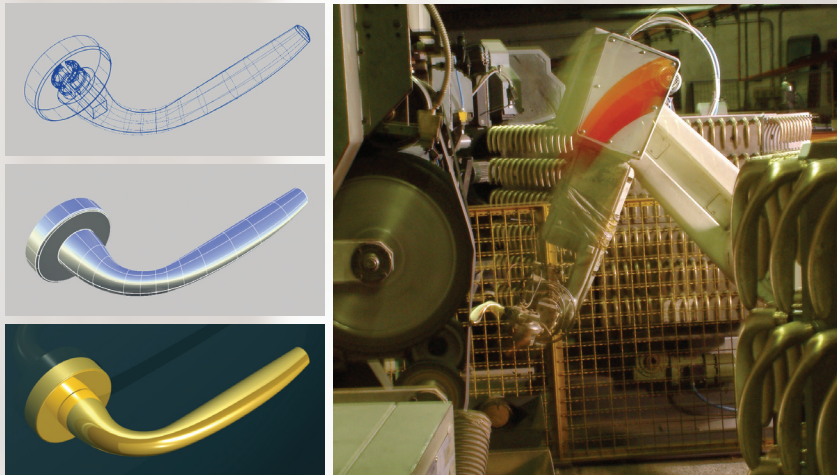
- 3 **About Us**
- 4 **Lever Designs**
- 5 **Lever Designs**
- 6 **Lever Designs**
- 7 **M500 Mortise Lock**
- 8 **Rose, Plate, Turnknob, Indicator Options**
- 9 **T600 Tubular Latchset**
- 10 **T700 Tubular Latchset**
- 11 **Auxiliary Locks, Accessories**
- 12 **Architectural, Decorative, Ornate Pulls**
- 13 **Locking Pulls**
- 14 **Sliding Door Locks and Trim**
- 15 **Custom Solutions**

Finish Code <small>(Reference BHMA)</small>	Finish Description
605	Polished Brass
606	Satin Brass
606M	Matte Satin Brass
609	Antique Brass
609M	Antique Brass – Matte
613	Oil-Rubbed Bronze
618	Polished Nickel
619	Satin Nickel
620	Antique Nickel
620M	Antique Nickel – Matte
622	Matte Black
IXBLK	PVD Black
625	Polished Chrome
626	Brushed Satin Chrome
629	Polished Stainless Steel
630	Brushed Satin Stainless Steel
695	Bronze Powder Coated
IXATC	Anthracite PVD Charcoal
IXB	InoxBrass PVD Bright Brass
IXS	InoxSatin PVD Satin Brass
IXSLN	InoxSatin London Night
IXC	InoxChrome PVD Stainless
AM	Anti-Microbial Coating

About Us

From our earliest beginnings in 1945 as a workshop in northern Italy, Frascio has grown to become a globally recognized decorative door hardware brand specified by premier architects and designers worldwide.

We remain true to our original manufacturing philosophy: to use only the highest quality materials, to continuously research emerging designs and technology, and to uphold careful attention to production detail.



We utilize the latest CAD engineering tools to create designs and ensure reliable system operation. And, for those projects that require additional shapes and configurations, we are pleased to offer our custom design services.

FR International, based in Carmel, Indiana, provides the commercial marketplace with all the advantages of a high-end decorative hardware brand combined with strong mechanical engineering and commercial hardware industry experience. Our designs are available on rugged commercial quality mechanical platforms that conform to market requirements.

Find our full downloadable Frascio Design Catalog online at FRInternational.com or contact us for physical electronic media version.



Environmentally-friendly manufacturing

Frascio products are manufactured primarily from brass, zinc, stainless steel, and steel. Much of the raw material used to produce these parts comes from recycled metal. The percentage of postconsumer and post-industrial recycled content is estimated as follows:

- ♻️ The brass and zinc materials that are used to make many Frascio products typically contain 80-100% recycled material, a combination of melted scrap metal and reclaimed by-products.
- ♻️ The post-industrial recycled content of steel used to make Frascio products is approximately 30-40% (Approximately 30%-40% of the metal used to produce Frascio products is either scrap metal or other recycled material that is melted in the furnace)
- ♻️ Stainless steel that is used in Frascio products has a post-industrial recycled content of approximately 70%, and a post-consumer recycled content of approximately 8%.
- ♻️ Approximately 40% of the packaging that is used by Frascio is comprised of recycled material

The above percentages show an average of Frascio's overall production. Actual percentages on any order will vary based on the specific products that comprise that order as well as the mill source.

When no longer needed, Frascio brass, stainless, and zinc parts are 100% recyclable.

Frascio is committed to responsible business and manufacturing practices that help conserve resources and protect our environment.

Lever Design Options

Choose from hundreds of high-end decorative lever designs engineered using the highest quality materials and crafted with careful attention to detail.

Many more designs are available in our product catalog at www.FRIInternational.com.



110 Apollo



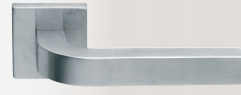
146 Star



200 Easy



220 Alpha



230 Beta



250 Butterfly



260 Cosmos



270 Metro



280 Straight



290 Kube



300 Laguna



380 Julius



400 Soft



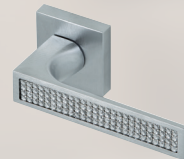
401 Soft Plus



610 Pinax



620 Tuke



621 Queen



630 Eidos



639 Theta



640 Kuma



650 Kalé



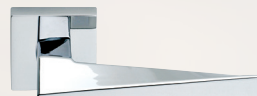
660 Inlay



700 Flow



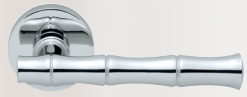
710 Aria



720 Sweep



745 Modulo L



785 Bambu



813 Verano



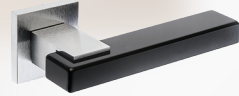
823 Saló



900 Stella



903 Trevi



925 Join



937 Corina



939 Allegra



1023 Ursa



1200 Bump



1210 Filoo



1220 Anatra



1500 Edge



1520 Leaf



1540 Chill



1550 Chill+



1580 Rise



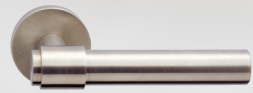
2250 Halley



5000 Alessia



5013 Urbano



5019 Band



5100 Lucia



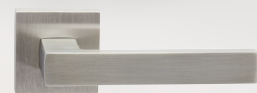
5130 Delta



5150 Gamma



5200 Loft



5219 Misano



5300 Omega



5350 Raffaella



5550 Laura



5650 Gabriella



5700 Loredana



5702 Stefano



5750 Adina



5752 Ellise



5800 Antonella



5804 Maretto



5810 Sigma



5820 Forino



5850 Christina



5855 Sophia



6118 Lorenzo



6202 Decora



6208 Esago



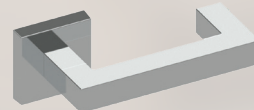
6210 Base



6215 Valenza



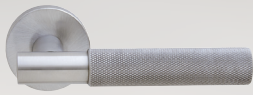
6218 Simpla



6220 Kappa



6280 Vienna



6587 Tacta



6592 Cutlass



6594 Modulo B



6605 Textura



6612 Marco



6774 Scala



6716 Arno

View more lever designs
in our product catalog at
www.FRInternational.com

M500 Series Mortise Locks

Frascio M500 Series mortise locks are ideal for use in offices, multi-family residential, hospitality, and other applications where decorative lever trim must also provide security and rugged dependability.

- M500 Series locks are available with virtually all Frascio decorative levers and knobs shown in this condensed product guide and in our full Frascio Design Catalog. In addition, more designs are available from our vast uncatalogued library.
- A wide variety of mechanical and electrified lock functions are available. To view the full range of configurations, refer to our M500 Series function chart.
- A wide range of roses, escutcheon plates, and turnknob/release designs are available.
- A full range of housings accommodating the industry's most popular cylinder and core configurations are available.



Specifications	
Applications	For commercial buildings where the finest mortise locks are required
Certifications	ANSI A156.13 Series 1000, Grade 1 operational. UL Listed for 3-Hour fire rating
Case Size	4-5/16" x 6" x 1" (110 mm x 152 mm x 25 mm)
Armor Front	1-1/4" x 8" x 7/32" (32 mm x 203 mm x 5 mm)
Backset	2-3/4" (70 mm) and 2-1/2" (63.5 mm)
Door Preparation	Conforms to ANSI A115.1
Door Range	1-3/8" (35mm) to 2-1/2" (64 mm) steel door, 1-3/4" (45mm) to 2-1/2" (64mm) wood door
Beveled Doors	Self-adjusting case
Case Handing	Field reversible without removing cover
Strike	Curved lip non-handed. Custom lip lengths at 1/8" (3 mm) increments available
Spindles	Breakable to prevent the lock case from unlocking or being damaged

M500 Rose Options



SM
Small Rose
52 mm (2")



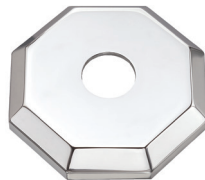
SMT
Small Traditional
Rose
58 mm (2-1/4")



SMQ
Small Square Rose
54 mm (2")



SMQR
Small Radiused
Square Rose
54 mm (2")



SMO
Small Octagonal
Rose
60 mm (2-5/16")

Plate Options



11010
Fairfax
248 x 58 mm
(9-3/4 x 2-1/4")



12010
Pallas
248 x 58 mm
(9-3/4 x 2-1/4")



18010
Riviera
239 x 45 mm
(9-3/8 x 1-3/4")



Custom plate
options also
available.

Turnknob Design Options



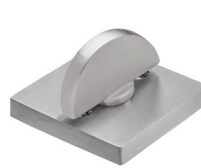
M61 Round
Smooth Rose



M61-T Round
Traditional Rose



M61-O Round
Octagonal Rose



M61-Q Round
Square Rose



RM61-Q
Rectangular
Square Rose



H41
Accessibility



A51 Oval



R71
Accessibility



C81 Round

Emergency Release/Indicator Options



EMT



EMTI
with color
indicator
window



SQR



EMTI-VO
with VAC/OCC
indicator
window



GVRO
occupancy
indicator

T600 Tubular Latchset

for 2-1/8" Bored-Hole Application



Frascio's T600 latchset is designed for maximum reliability, use with standard door prep, and easy time-saving installation — a proven favorite of designers everywhere.

T600 Series Rose Options — Fully interchangeable within the T600 Series



1903 Contemporary



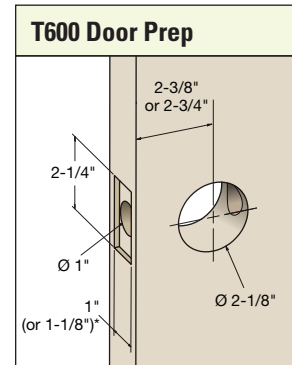
1905 Traditional



1912 Smooth



1912Q Square



Dimensions are approximate and for reference only. Please refer to Frascio template.

A beautiful lever trim set needs a mechanical system that allows it to perform flawlessly for years. Frascio's T600 tubular lever sets deliver outstanding performance every time due to its unique heavy duty interlocking backplate system.

- Wide variety of lever designs from our world-renowned studio
- Available in six function and trim combinations
- Fast and easy installation
- Concealed trim fasteners

T600 Specifications	
Application	Residential and hospitality interior doors requiring passage, privacy, communicating, and dummy trim functions
Material	Brass, stainless steel, and die cast zinc levers and roses. Latch faceplates and strikes stainless steel
Backset	2-3/8" (60mm) and 2-3/4" (70mm)
Handing	Non-handed trim set. Latchbolt handing and bevel is field reversible
Door Thickness Range	1-3/8" (35mm) to 2" (51mm); thick door parts kit available
Door Preparation	2-1/8" Bored Hole — refer to door prep template for specifics. ANSI 160 or ANSI 161
Faceplate	1" x 2-1/4" square corner standard; 1-1/8" wide option available
Strike	1-1/8" x 2-3/4" T Strike with 1-1/8" lip standard; Full Lip Strike, 1/4" Radius Full Lip Strike and ASA Strike options available



T700 Tubular Latchset

for Custom Small Bored-Hole Application



The Frascio T700 is an innovative small rose trim solution matching the tubular latchsets' appearance with mortise locks — when elegance and continuity matter.

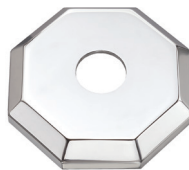
T700 Series Rose Options — Fully interchangeable within the T700 Series



SMT
Small Traditional



SM Small



SMO
Small Octagonal



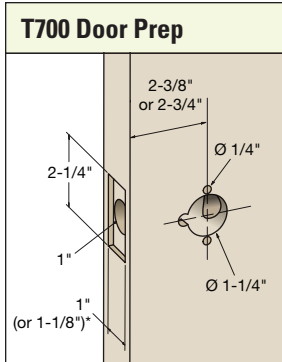
SMQ
Small Square



SMQR Small
Radiused Square

T700 lever sets provide the optimal combination of elegant aesthetics and outstanding commercial-grade performance. The T700 utilizes the same rose mounting backplate system and rose platform as we use for ANSI Grade 1 mortise trim. Unparalleled mechanical performance and virtually unlimited decorative design option capability are sure to please.

- Wide variety of lever designs from our world-renowned studio
- Available in six function and trim combinations
- Fast and easy installation
- Concealed trim fasteners
- Perfect complement to matching mortise locks, electronic access control locks



Dimensions are approximate and for reference only. Please refer to Frascio templates.

T700 Specifications	
Application	Residential and hospitality interior doors requiring passage, privacy, communicating, and dummy trim functions
Material	Brass, stainless steel, and die cast zinc levers and roses. Latch faceplates and strikes stainless steel
Backset	2-3/8" (60mm) and 2-3/4" (70mm)
Handing	Non-handed trim set. Latchbolt handing and bevel is field reversible
Door Thickness Range	1-3/8" (35mm) to 2" (51mm); thick door parts kit available
Door Preparation	Custom small hole door drilling required — refer to door prep templates for specifics
Faceplate	1" x 2-1/4" square corner standard; 1-1/8" wide option available
Strike	1-1/8" x 2-3/4" T Strike with 1-1/8" lip standard; Full Lip Strike, 1/4" Radius Full Lip Strike and ASA Strike options available



Auxiliary Locks

Mortise Dead Lock



MD Series

Ideal for use as an auxiliary lock or as a primary locking device where latching is not required.

Tubular Deadbolts



D500 Series

Square Deadbolt Sets

Available in keyed cylinder, coin release, and occupancy indicator configurations. An ideal complement to the square 1912Q T600 Series leverset rose.



D600 Series

Round Deadbolt Sets

Available in keyed cylinder, coin release, and occupancy indicator configurations. An ideal complement to the round 1912 T600 Series leverset rose.



B80/81

Communicating Deadbolt

Single side deadbolt for use in connecting or exit door applications

Accessories

Floor Stops

Frascio offers a variety of door stops, in wall, hinge, and floor stop configurations. Shown below are a sampling of floor stop designs available.



Hinges

Hinges are available to complement specific project requirements. A variety of designs and sizes are available. A sampling is shown here to represent the category.



Cabinet Pulls

Cabinet or furniture pulls are available on a make-to-order basis to for millwork applications. Frascio is able to provide complementary design suiting to larger door pulls and to certain door knob and lever designs. Shown below is a sampling representing the category.



Door Pulls

Architectural Pulls

Frascio architectural door pulls are available in both straight and offset versions and can be configured in an unlimited variety of shapes, sizes, materials, and finishes. Our pulls can easily be tailored to meet special project requirements.

In addition, we also proudly offer a range of standard ladder pulls in the most popular sizes, and with convenient availability. Shown in this chart are typical ladder pull sizes, custom CTC sizes are also available.

Typical Sizes (custom available)	
Overall	CTC
12"	8"
18"	14"
24"	18"
36"	30"
48"	36"
60"	48"
72"	60"
84"	72"
96"	84"



Decorative/Custom Pulls

Frascio has an experienced and highly capable engineering department able to bring your ideas to life. We use 3D CAD design technology to engineer your ideas from concept to image renderings, and oversee through prototypes to production.

We welcome the opportunity to create a custom solution for you.



Zermat Collection Ornate Pulls

The Zermat Collection is an exclusive range of door pull designs inspired by classic European architecture. Featuring outstanding detail, craftsmanship, and nuanced finishes, Zermat pulls are also presented with a companion range of complementary lever handles and accessories.



Locking Pulls

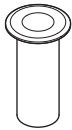
Frascio locking door pulls add contemporary design and security functionality to door openings of all sizes. The concealed deadbolt locking system inside the pull provides a clean and elegant installation that eliminates the need for unsightly patch fittings or rails on glass door applications.

- Cylinder and turnknob located at a convenient height
- Multiple size, shape, design, and finish options and custom specification capability allow for unlimited combinations
- Suites with a wide range of Frascio door pulls, lever handle designs and trim components

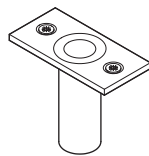
Strike Options

Bottom locking

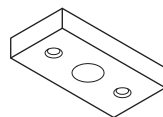
LDPS1
Floor (standard)
1-3/16" Diameter



LDPS2
Floor with flange
Flange is 2-3/4" x 1-3/8"



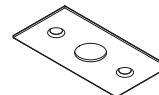
Top locking



LDPS4
Top block (standard)



LDPS5
Top transom—single



LDPS3
Top plate

Finish Options



629
Polished
Stainless
Steel



630
Satin
Stainless
Steel



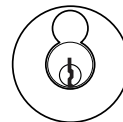
622
Matte
Black

Cylinder Options

Configured to standard SFIC, LFIC, non-interchangeable core, and others.



SFIC



LFIC

Sargent
Yale
Medeco
Schlage
Corbin Russwin

Features
Multiple lengths available, including custom
Multiple shapes and designs available, including custom
Multiple operating configurations available; standard is key operated from exterior, turnknob from interior
Can be used with both swinging and sliding doors
Non-keyed privacy function available as well as matching non locking pulls (dummy)
Multiple locking options: bottom bolt standard, top bolt, or dual locking available
Bolt location: approximately 2-5/8" from face of door to centerline of bolt
5/8" stainless steel deadbolt with 1-1/4" throw. Includes dust proof floor strike.
Standard door thickness range: 5/16"–3/4" glass or solid panel; 1-3/4" to 2-1/4" aluminum, hollow metal, or wood doors



Sliding Door Locks and Trim

Recessed Trim for Sliding Door Locks

Our Frascio recessed flush cup trim options are compatible with SL1, SL2, or SL4 sliding door lock mechanisms, shown below.

Each trim shape is available in both privacy (requiring a lock mechanism) and passage functions. Finger edge pull options available, refer to Frascio Design Catalog.



Flush Pulls

Frascio offers a wide range of make-to-order flush recessed pulls for sliding pocket and barn door applications. Stainless steel, brass, bronze, and aluminum materials are utilized depending on the requirements of the project. Shown below are a few shape and style examples.



Sliding Door Lock Mechanism Options



SL1: Hook Bolt
Standard duty hookbolt lock for residential and hospitality.



SL2: Expanding Bolt
Heavy duty and rugged, this robust lock can be used in a variety of applications and is activated by turnknob, coin release, or keyed cylinder.



SL4: Hook Bolt with Edge Pull
Refined and elegant, this sliding pocket door lock incorporates a pop-out edge pull.



SL5: Expanding Bolt
This robust barn door lock can be locked by key outside or turn knob inside. Vertically-mounted lever retracts the deadbolt and pulls the door open in one continuous motion.

Customized Solutions

Decorative Lever Solutions for Electronic Access Control

Many Frascio lever designs can be adapted for use with the industry's most popular access control systems to provide a fully suited design package for your project. Options are available for both escutcheon and sectional trim configurations.



Decorative Lever Solutions for Exit Device Trim

Most Frascio levers can be adapted for use on industry leading panic exit device trim. Using a Frascio decorative lever on device trim in front of house spaces provides a visual design connection to Frascio electronic and mechanical mortise locks and latchsets and provides design continuity throughout the project.



Frascio specializes in providing custom-engineered solutions to solve problems and meet challenges in commercial projects. Shown below are just a few examples of the types of challenges we love to help solve:

Challenge:

- Design custom stainless steel escutcheon with suite numbers included
- Utilize standard Frascio lever design

Solution:



Challenge:

- Provide old world style trim in white bronze to work with current generation mortise locks

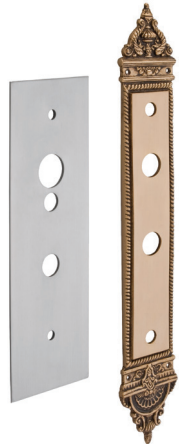
Solution:



Challenge:

- Provide new escutcheon trim plates to match existing escutcheon plates to preserve historical integrity of building

Solution:



Challenge:

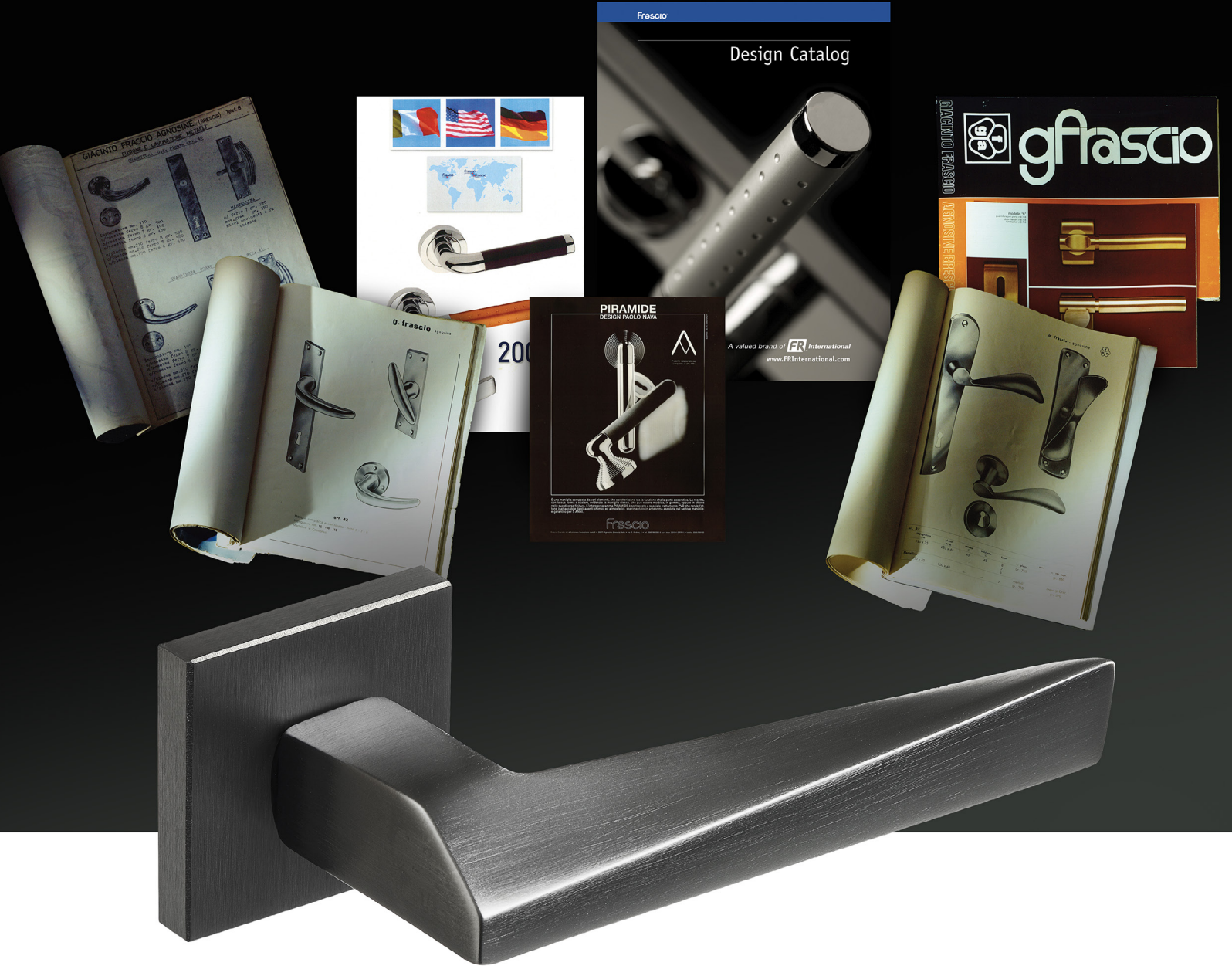
- Provide rugged bronze appearance in hardware for access control locks, mechanical mortise locks, and interior tubular sets

Solution:



Frascio®

Proudly Celebrating 75 years
of Innovative Hardware Design



FR International, LLC
1011 3rd Avenue S.W.
Carmel, Indiana USA 46032
Tel: (317) 663-0030
Fax: (317) 663-0029
Toll Free: 1-800-238-9711
www.FRInternational.com

